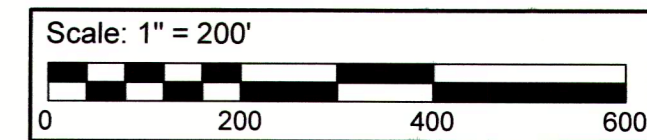
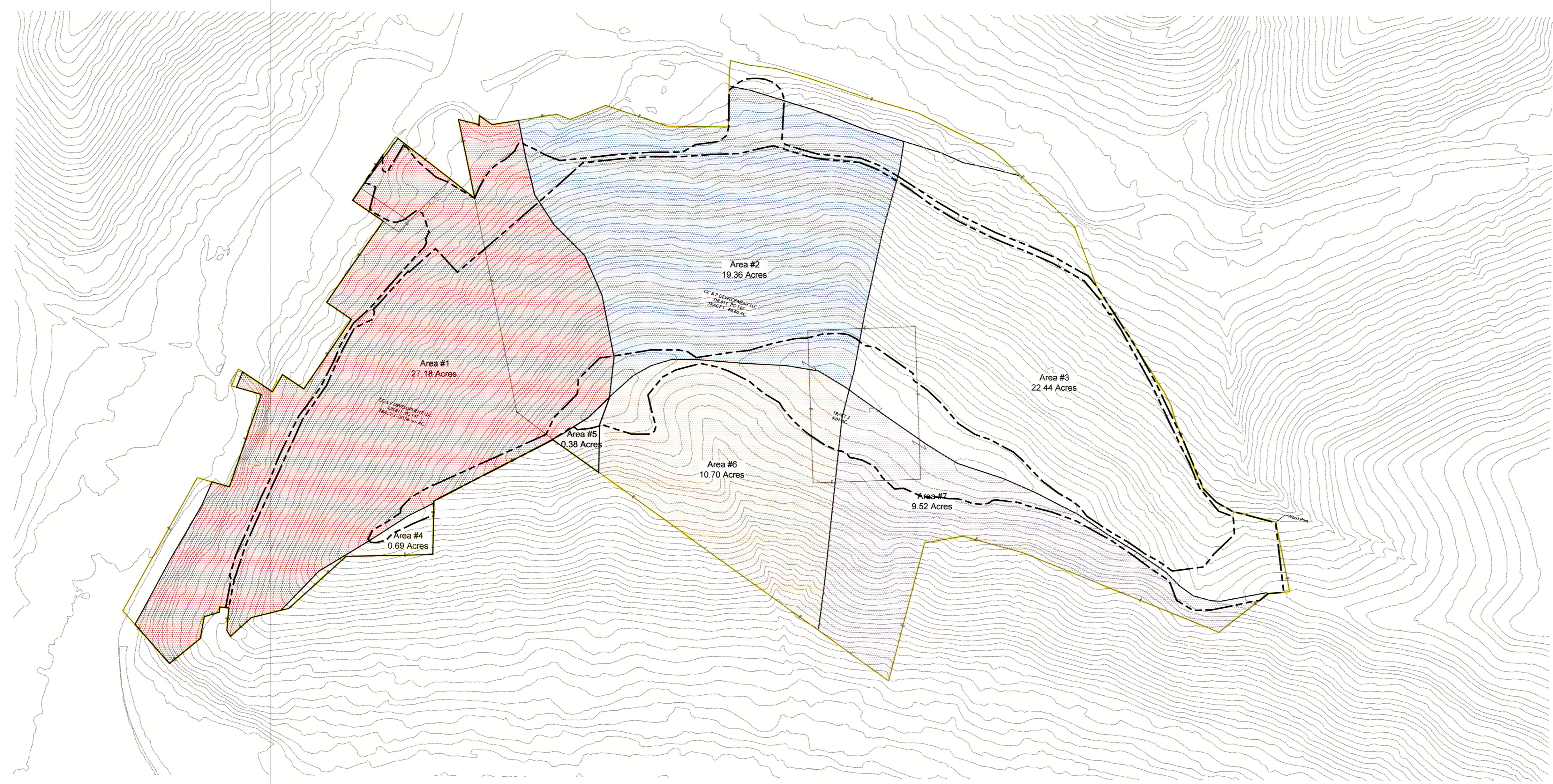


Legend

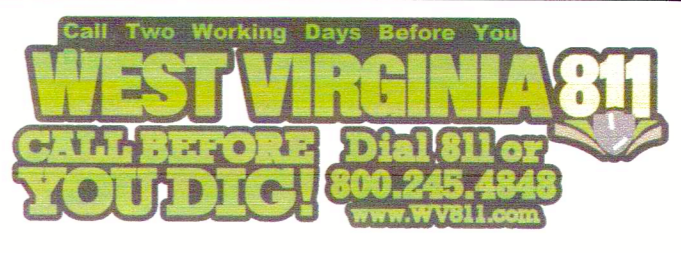
- Proposed Permit Boundary - (16.24 Acs.)
- Property Boundary
- Area #1: 27.18 Acs. (62.00 cfs)
- Area #2: 19.36 Acs. (44.16 cfs)
- Area #3: 22.44 Acs. (51.18 cfs)
- Area #4: 0.69 Acs. (1.57 cfs)
- Area #5: 0.38 Acs. (0.87 cfs)
- Area #6: 10.70 Acs. (24.41 cfs)
- Area #7: 9.52 Acs. (21.71 cfs)



GC&P DEVELOPMENT, LLC.
 Located in the City of Wheeling, Wheeling District,
 Ohio County, West Virginia
**Pre/Post Construction
 Drainage Area Map**



- Mapping Notes**
- Existing contours shown were generated from GRID information obtained from the West Virginia GIS Technical Center.
 - Access Road and Core Holes were field located by Jack A. Hamilton and Associates Inc. on Dec. 2014.



REVISIONS					DRAWN BY	D.B.
No.	DATE	DESCRIPTION	BY	CHKD	CHEKED BY	DATE

SHEET
DA 61